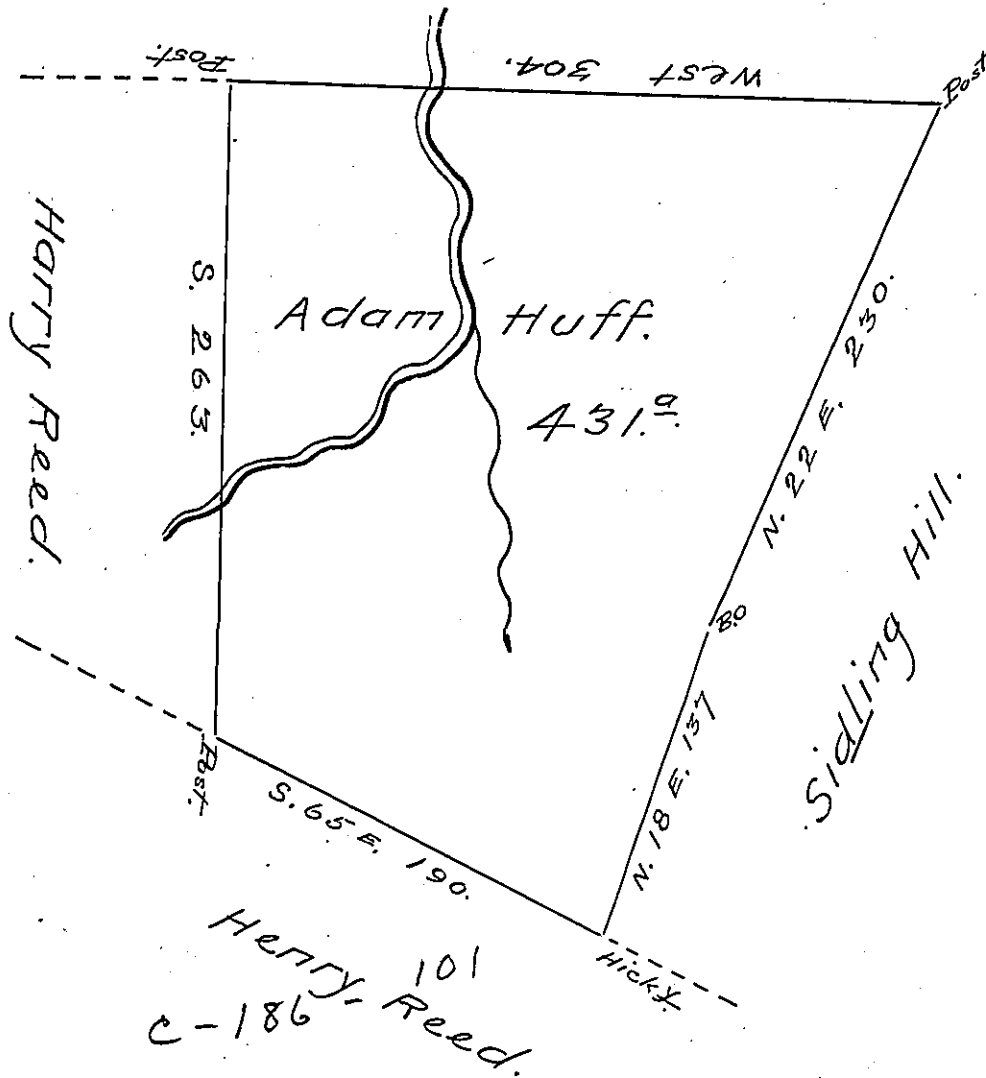


Fig. 77



Situate on the waters of Tonollaway Creek in  
 Bethel Township, Bedford County Containing 431 acres  
 with the usual allowance of six per cent for Roads & Fee  
 Surveyed for Adam Huff the 27<sup>th</sup> Day of October 1794  
 on Warrant dated the 21<sup>st</sup> day of February 1794  
 by George Woods D.S.

Examined by me December 15<sup>th</sup> 1808

To Samuel Cochran Esq,  
 Surveyor General.

John Anderson  
 Deputy Surveyor.

IN TESTIMONY that the above is a copy of the original remaining on file in  
 the Department of Internal Affairs of Pennsylvania, made  
 conformably to an Act of Assembly approved the 16th day of  
 February, 1833, I have hereunto set my Hand and caused  
 the Seal of said Department to be affixed at Harrisburg,  
 this Twenty second day of March 1905.

*James R. [Signature]*  
 Secretary of Internal Affairs.